

DESCRIZIONE Barre colletrici	ARTICOLO ACCESSORI DI CONNESSIONE PER IMPIANTI DI TERRA <i>Connection fittings for earthing systems</i>	DESCRIPTION Marshalling busbar
--	---	--

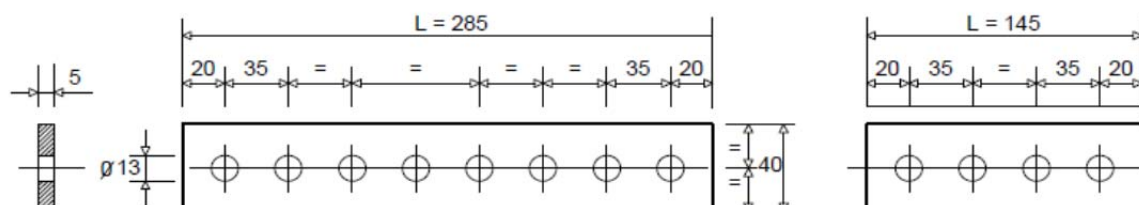


Fig. A SBARRETTI COLLETRICI
 MARSHALLING BUS BARS

(Fissaggio con zanche su muratura o struttura)
 (Fastening with rang bolts on masonry or metallic structure)

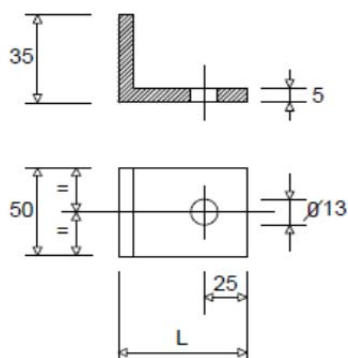


Fig.B
 PIASTRA DI
 CONNESSIONE
 CONNECTION
 PLATE

(Saldata su struttura
 metallica
 Welded on metallic
 structure)

(Dimensioni in mm)
 (Dimensions in mm)

Fig.	Lunghezza <i>Lenght</i> L	Materiale <i>Material</i>
A	285	Piatto in rame stagnato per immersione <i>Tinned copper plate with hot dip process</i>
	145	
	285	Piatto in acciaio inossidabile: - per ambienti marini; X2CrNiMo 1712 (AISI 316L) con carico di rottura alla trazione 520 N/mm ² (MPa).
	145	
B	55	<i>Stainless steel plate:</i> - for marine environments; X2CrNiMo 1712 (AISI 316L), tensile strenght 520 N/mm ² (MPa).
	105	

DESCRIZIONE Capicorda e connettori	ARTICOLO ACCESSORI DI CONNESSIONE PER IMPIANTI DI TERRA <i>Connection fittings for earthing systems</i>	DESCRIPTION Clamps and connectors
---------------------------------------	--	--------------------------------------

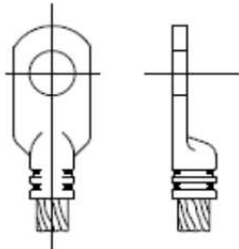


Fig. A CAPOCORDA A COMPRESSIONE
COMPRESSION TYPE LUG

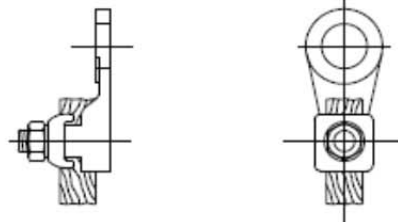


Fig. D CAPOCORDA A MORSETTO
CLAMP TYPE LUG

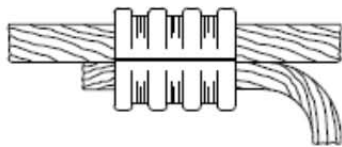


Fig. E CONNETTORE A COMPRESSIONE
COMPRESSION TYPE CONNECTOR

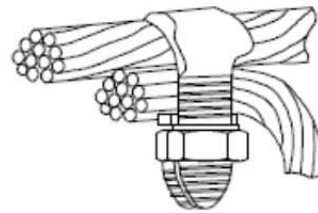


Fig. F CONNETTORE A MORSETTO
CLAMP TYPE CONNECTOR

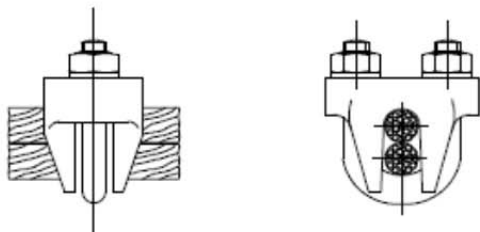


Fig. G CONNETTORE A MORSETTO
CLAMP TYPE CONNECTOR

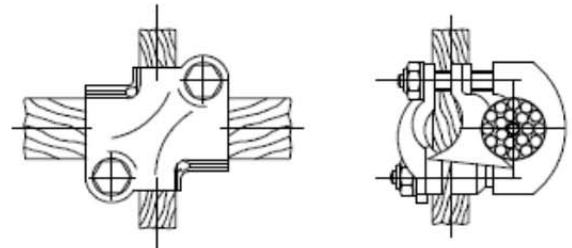


Fig. H CONNETTORE A MORSETTO
CLAMP TYPE CONNECTOR

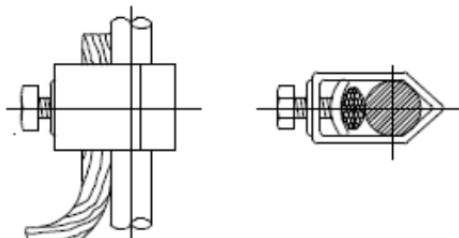


Fig. L CONNETTORE A MORSETTO PER FERRO
TONDO O ELETTRODO
CLAMP TYPE CONNECTOR FOR ROUND
IRON ON ELECTRODE

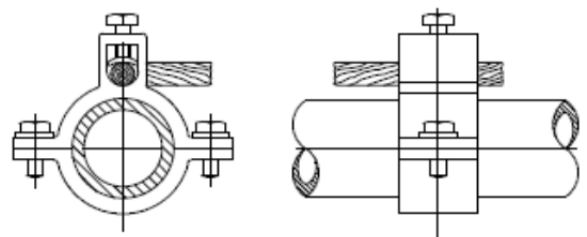


Fig. M CONNETTORE A MORSETTO PER TUBI
CLAMP TYPE CONNECTOR FOR PIPE

DESCRIZIONE Connettori / Tracce di rame	ARTICOLO ACCESSORI DI CONNESSIONE PER IMPIANTI DI TERRA <i>Connection fittings for earthing systems</i>	DESCRIPTION Connectors and flex copper braid
--	--	---

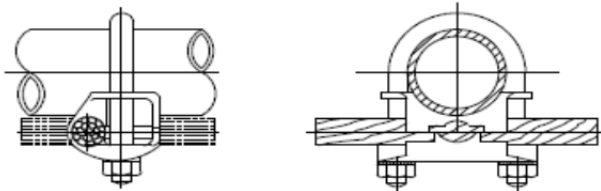


Fig. N CONNETTORE A MORSETTO PER TUBO
CLAMP TYPE CONNECTOR FOR PIPE

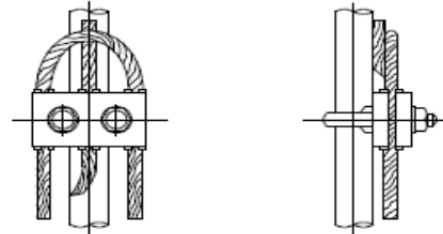


Fig. P CONNETTORE A MORSETTO PER TUBO O FERRO TONDO
CLAMP TYPE CONNECTOR FOR PIPE OR ROUND IRON

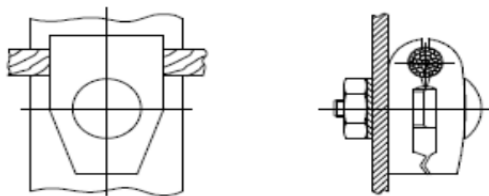


Fig. Q CONNETTORE A MORSETTO SU SUPERFICE PIANA
CLAMP TYPE CONNECTOR ON PLANE SURFACE

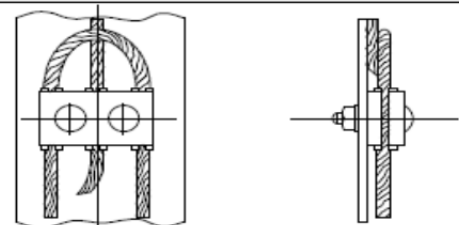


Fig. R CONNETTORE A MORSETTO SU SUPERFICE PIANA
CLAMP TYPE CONNECTOR ON PLANE SURFACE

BULLONE A ZANCA PER FISSAGGIO DELLE BARRE DI TERRA
HOOK BOLT FOR GROUND PLATES FASTENIN
FIG. T

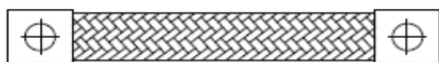


Fig. S CONNETTORE A TRECCIA FLESSIBILE DI RAME
FLEXIBLE COPPER PLAIT TYPE CONNECTOR

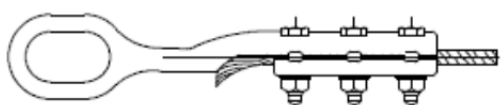
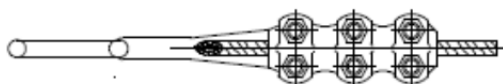


Fig. U MORSETTO DI AMARRO PER FUNE METALLICA
MOORING CLAMP FOR WIRE ROPE

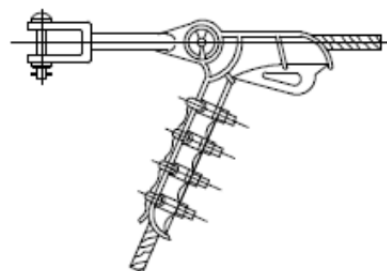


Fig. V MORSETTO DI AMARRO PER FUNE METALLICA
MOORING CLAMP FOR WIRE ROPE